

International Journal of Applied Engineering Research (IJAER)

Print ISSN 0973-4562

Online ISSN 0973-9769

Editor-in-Chief:

Prof. Dr. Eng. Ali MERDJI,

Faculty of Science and Technology,

Route de Mamounia,

University of Mascara,

B.P 305, Mascara (29000),

Algeria.



Aims and Scope: The *International Journal of Applied Engineering Research (IJAER)* is an international research journal, which publishes top-level work from all areas of Engineering Research and their application including Mechanical, Civil, Electrical, Computer Science and IT, Chemical, Electronics, Mathematics, Environmental, Education Geological etc. Researchers in all technology and engineering fields are encouraged to contribute articles based on recent research. Journal publishes research articles and reviews within the whole field of Engineering Research, and it will continue to provide information on the latest trends and developments in this ever-expanding subject.

Audience: Mechanical, computer, aeronautical, chemical, civil, electronics, mathematic, geology, electrical.

Submission: Authors are requested to submit their papers electronically to IJAEReditor@gmail.com

INDEXING: SCOPUS(2010-2017), EBSCOhost, GOOGLE Scholar, JournalSeek, J-Gate, ICI, Index Copernicus IC Value 82.67 and **UGC Approved Journal - 2017 (Journal No. - 64529)**

Publication Date and Frequency: Twelve issues per year.

DOI No. DOI:10.37622/000000

✚ [Publication Ethics and Publication Malpractice Statement](#)

✚ [Editorial Board Members](#)

✚ [Vol. 1 No.1 No.2 No.3](#) (2006)

✚ [Vol. 2 No.1 No.2 No.3 No.4](#) (2007)

- ✚ [Vol. 3 No.1 No.2 No.3 No.4 No.5 No.6 No.7 No.8 No.9 No.10 No.11 No.12](#) (2008)
- ✚ [Vol. 4 No.1 No.2 No.3 No.4 No.5 No.6 No.7 No.8 No.9 No.10 No.11 No.12](#) (2009)
- ✚ [Vol. 5 No.1 2 3 4 5 6 7 8 9 10 11 12 13 14 15 16 17 18 19 20 21-22 23-24](#) (2010)
- ✚ [Vol. 6 No.1 2 3 4 5 6 7 8 9 10 11 12 13 14 15 16 17 18 19 20 21 22 23-24](#) (2011)
- ✚ [Vol. 7 No.1 2 3 4 5 6 7 8 9 10 11 12](#) (2012)
- ✚ [Vol. 8 No.1 2 3 4 5 6 7 8 9 10 11 12 13 14 15 16 17 18 19 20](#) (2013)
- ✚ [Vol. 9 No.1 2 3 4 5 6 7 8 9 10 11 12 13 14 15 16 17 18 19 20 21 22 23 24](#) (2014)
- ✚ [Vol.10 No.1 2 3 4 5 6 7 8 9 10 11 12 13 14 15 16 17 18 19 20 21 22 23 24](#) (2015)
- ✚ [Vol.11 No.1 2 3 4 5 6 7 8 9 10 11 12 13 14 15 16 17 18 19 20 21 22 23 24](#) (2016)
- ✚ [Vol.12 No.1 2 3 4 5 6 7 8 9 10 11 12 13 14 15 16 17 18 19 20 21 22 23 24](#) (2017)
- ✚ [Vol.13 No.1 2 3 4 5 6 7 8 9 10 11 12 13 14 15 16 17 18 19 20 21 22 23 24](#) (2018)
- ✚ [Vol.14 No.1 2 3 4 5 6 7 8 9 10 11 12 13 14 15 16 17 18 19 20 21 22 23 24](#) (2019)
- ✚ [Vol.15 No.1 2 3 4 5 6 7 8 9 10 11 12](#) (2020)
- ✚ [Vol.16 No.1 No.2 No.3 No.4 No.5 No.6 No.7 No.8 No.9](#) (2021)
- ✚ [Special Issues](#)
- ✚ [Authors Information](#)
- ✚ [Subscription](#)
- ✚ [Call for Papers](#)
- ✚ [Other Journals](#)
- ✚ [Library Recommendation Form](#)

Research India Publications

International Journal of Applied Engineering Research (IJAER)

Editorial Board Members

Vincenzo Niola, Professor, Department Of Industrial Engineering,, University Of Naples Federico II – Engineering Faculty, Naples, Italy

Area of Interest : Mechanics, Robotics, Diagnostics Of Mechanical Systems, Non-Linear Analysis Of Mechanical Systems, Vibrations, Tribology

Rose Farahiyah Munawar, Senior Lecturer, Department Of Engineering Materials, Faculty Of Manufacturing Engineering, Universiti Teknikal Malaysia Melaka

Area of Interest : Nanotechnology, Environmental And Green Materials, Cellulose Derivatives, Materials Characterization And Materials Science & Engineering

Ruaa Alsaabah, Lecturer, Department Of Computer Science, Freha Campus, Kerbala University, Kerbala, Iraq

Area of Interest : Internet Of Things & Big Data Analysis, Wireless Communication 4G, 5G And Beyond, Microwave Remote Sensing, Space-Borne – Airborne Platforms And Calibration And Validation Measurements.

Dr. Asim Datta, Associate Professor & Head, Dept. Of Electrical Engineering, Mizoram University (A Central University), Tanhril, Aizawl-796004, Mizoram

Area of Interest : Electrical Power Systems, Renewable Energy Sources, Embedded Systems

Pranav Mahamuni, Research Assistant, Department Of Mechanical Engineering, Stony Brook University, Stony Brook, New York, United States Of America

Area of Interest : Mechanical Engineering - Cad/Cam, Product Design, Rapid Prototyping, Finite Element Analysis

Dr. Diego Bellan, Professor, Department Of Electronics, Information And Bioengineering, Politecnico Di Milano, Piazza Leonardo Da Vinci 32, 20133, Milan, Italy

Area of Interest : Power Quality, Electromagnetic Compatibility

Dr. Claudia Espro, Assistant Professor, Department Of Engineering, Contrada Di Dio, 4° Piano, Blocco C, 98166 Messina, Italy

Area of Interest : Heterogeneous Catalysis And Development Of Novel Catalytic Green Processes. Catalytic Conversion Of Natural Gas And Light Alkanes Into Intermediates, Fuels And Chemicals Of Higher Added Value. Conversion Of Renewable Biomass For The Production Of Bulk Chemicals,

Electrochemical Sensors

Dr. Massila Kamalrudin, Deputy Dean, Associate Professor, Faculty of Information Technology and Communication , Institute of Technology Management and Entrepreneurship, Universiti Teknikal Malaysia Melaka Malaysia

Area of Interest : ICT, software engineering

Dr. Nilamadhab Mishra, Assistant Professor, School Of Computing, Debre Berhan University, Ministry of Education, Government of Ethiopia.

Area of Interest : Encompass Network Centric Data Management, Data Science: - Analytics and Applications, CIoT Big-Data System, and Cognitive Apps Design & Explorations.

Dr. Liew Pay Jun, Senior Lecturer, Department Of Manufacturing Process, Faculty Of Manufacturing Engineering, Universiti Teknikal Malaysia Melaka, Durian Tunggal, Melaka, Malaysia.

Area of Interest : Electrical discharge machining, machining, micro/nano machining, nanofluid

Dr. G.PARAMASIVAM , Associate Professor, Department Of Computer Science, KG COLLEGE OF ARTS AND SCIENCE, Tamil nadu, India.

Area of Interest : Image processing, Computer Network

Dr. Ch. Swapna Priya, Assistant Professor, Department Computer Sceince And Engineering, Vignan's institute of Information Technology, Visakhapatnam, Andhra Pradesh, India.

Area of Interest : Image processing, Pattern recognition deep learning, machine learning

Dr. K. Sangeetha, Assistant Professor, Department Of Computer Science & Engineering, SNS College of Technology, Coimbatore, Tamilnadu, India.

Area of Interest : Theory of computation, Computer Networks, Advanced Computer Architecture, Operating Systems, Computer Programming, Network Security, Object Oriented Analysis and Design and Data Base Management System

Dr. Deepali Gupta, Professor And Head, Department Of Computer Sceince & Engineering, Maharishi Markandeshwar University, Sadopur, Sadopur, Ambala, India.

Area of Interest : Computer Engineering & Information Technology, Software Engineering, Genetic Algorithms and Cloud Computing

Dr. Ghassan Fadhil Smaisim, Associate Professor, Department of Mechanical Engineering, University of Kufa, Faculty of Engineering, Kufa, P.O. Box: 21, Najaf Government.

Area of Interest : Enhancement Heat Transfer, Renewable Energy, Fluid Mechanics, Thermal Nanofluid Flow, Power Generation, Solar Energy, CFD.

Dr. Darshankumar Chandrakant Dalwadi, Associate Professor, Department of Electronics and Communication Department, Birla Vishvakarma Mahavidyalaya Engineering College, Post Box No. 20

Area of Interest : Digital Communication, Wireless Communication and M
Tech Information Theory and Coding

Jong-Wook Lee, Electrical & Computer Engineering, Ajou University,
Worldcupro 206, Yeongtong-gu. 16499, Geonggi-do, **South Korea**
Area of Interest: I Device structure and materials for sub-0.5V voltage
operation, I Scaling-down enabling technology, I Low-power, high-speed
devices and circuits.

Mohd Hafiz bin Jali, Faculty of Electrical Engineering, Universiti Teknikal
Malaysia Melaka, Hang Tuah Jaya, 76100, Melaka, **Malaysia**
Area of Interest: Control system, Signal Processing, Rehabilitation, Human
assist technology. Pattern Recognition, Robotic.

Timon Rabczuk, Chair of Computational Mechanics, Bauhaus University
Weimar, Marienstrasse 15, 99423 Weimar, **Germany**

Hacene Mahmoudi, Vice Rector for Animation, promotion of scientific
research, Hassiba Benbouali University, B.P. 151, Chlef, **Algeria**

Mircea Cristian DUDESCU, Technical University of Cluj-Napoca, Faculty of
Mechanical Engineering, Departament of Mechanical Engineering, B-dul
Muncii 103-105, 400641 Cluj-Napoca, **Romania**
Area of interest: mechanics of materials, experimental mechanics,
mechanical testing, structural analysis of MEMS.

Rajeev Ahuja, Physics Department, Uppsala University, Box 530, 751 21
Uppsala, **Sweden**
Area of interest: Computational Materials Science, Electronic Materials,
Spintronics, High pressure, Dynamics.

Shigeru Aoki, Department of Mechanical Engineering, Tokyo Metropolitan
College of Technology, Shinagawa-ku, Tokyo 140-0011, **Japan**
Area of Interest: Random vibration, Seismic response of mechanical system,
Approximate analysis of nonlinear vibration.

G.Q. Chen, Department of Mechanics and Engineering science, Peking
University, Beijing 100871, **China**
Area of Interest: CFD (Computational fluid dynamics), energy and resources
engineering, and systems ecology.

Anna Laura Pisello, Department of Engineering, CIRIAF – Interuniversity
Research Center, University of Perugia, **Italy**

Dr. Jahar Sarkar, Department of Mechanical Engineering, IIT (BHU)
Varanasi, UP-221005, **India**
Area of Interest: Energy, Thermal & Fluid Engineering.

Verena Kantere, Centre Universitaire d' Informatique, University of Geneva, Bâtiment A, Route de Drize 7, 1227 Carouge, **Switzerland**

Kong Fah TEE, Department of Engineering Science, University of Greenwich, Central Avenue, Chatham Maritime, Kent ME4 4TB **United Kingdom**
Area of Interest: Structural Health Monitoring and Management, Structural System Identification and Life Prediction, Forensic Engineering.

B.T.F. Chung, Department of Mechanical Engineering, University of Akron, Akron, Ohio 44325, **USA**
Area of interest: Heat Transfer with Phase Changes, Optimum Design of Extended Surfaces, Radiative Heat Transfer System.

Marcelo J.S. De Lemos, Departamento de Energia - IEME, Instituto Tecnológico de Aeronáutica - ITA, 12228-900 São José dos Campos S.P. - **Brazil**
Area of interest: Turbulence Modeling, Porous Media, Combustion in Porous Media, Numerical Methods, Finite Volume.

Dimitris Drikakis, Head of Aerospace Sciences Department, Cranfield University, School of Engineering, Cranfield, MK43 0AL, **United Kingdom**
Area of Interest: Computational Fluid Dynamics, Aerodynamics, Turbulence Gas dynamics, Computational Nanotechnology.

A.S. Al-Harthy, Department of Civil, Surveying and Environmental Engineering, University of Newcastle, Callaghan, NSW 2308 **Australia**
Area of interest: Concrete material and durability, Recycling construction materials, reliability assessment of structures.

S.Z. Kassab, Mechanical Engineering Department, Faculty of Engineering, Alexandria University, Alexandria, 21544 **Egypt**
Area of Interest : Experimental Fluid Mechanics, Lubrication, Energy, Environment and Pollution.

Bashar El-Khasawneh, Chairman, Industrial Engineering Department, JUST, P.O. Box 3030, Irbid 22110 **Jordan**
Area of Interest: Design process and manufacturing-related sciences and processes, advanced and parallel kinematics machine tools.

Kazuhiko Kudo, Laboratory of Micro-Energy Systems, Division of Human Mechanical Systems and Design, Graduate School of Engineering, Hokkaido University, **Japan**
Area of interest: Radiative heat transfer analysis, transient analysis on surface

tension.

Carlos Mario Morales Bautista, Calzada Olmeca 105. Cerrada Chiltepec No. 1. Fraccionamiento la Venta. Villa Parrilla II. C.P. 86280. Villahermosa, Centro, Tabasco, **Mexico**

Ihab Obaidat, Department Of Physics, College of Science, United Arab Emirates University, P.O. Box 15551, Al Ain, **UAE**
Area of Interest: Nanomagnetism, Superconductivity.

Huihe QIU, Department of Mechanical Engineering, The Hong Kong University of Science and Technology, Clear Water Bay, Kowloon **Hong Kong**
Area of Interest: Transport phenomena in microscale multiphase flows, micro sensors and actuators, optical diagnostics and instrumentation.

S.A. Soliman, Electrical Engineering Department, University of Qatar, P. O. Box 2713 Doha **Qatar**
Area of Interest: Applications of State Estimation to Electric Power Systems, Fuzzy and Neural System Applications to Electric Power Systems.

Dimitri V. Val, Dept. of Structural Engineering, Faculty of Civil and Environmental Engineering, Technion - Israel Institute of Technology, Haifa 32000, **Israel**
Area of Interest: structural safety and reliability; analysis, design, and assessment of reinforced concrete and steel structures.

Guo-Xiang Wang, Department of Mechanical Engineering, The University of Akron, Akron OH 44325-3903 **USA**
Area of Interest: Heat and Mass Transfer, Materials Processing, Solidification Theory and Application.

Samir Mekid, Mechanical Engineering Department, King Fahd University of Petroleum and Minerals PO Box 155, Dhahran, 31261, **Saudi Arabia**

Abdul Razak Rehmat, Department of Bioprocess & Polymer Engineering, Faculty of Chemical & Energy Engineering, Universiti Teknologi Malaysia, 81310 Johor Bahru, **Malaysia**
Area of Interest: Polymer Processing and Rheology, Biobased Polymer Composite, Microwave Processing of Polymer.

V.R. Mudinepalli, Department of Physics, National Taiwan Normal University, Taipei, 11677, **Taiwan**.

Damodar Maity, Civil Engineering Department Indian Institute of Technology, Kharagpur, West Bengal, **India**

Area of Interest: Damage Assessment of Structures; Seismic Resistant of Structures; Fluid-Structure Interaction; Sloshing; Concrete Gravity Dam.

NG EYK, School of Mechanical & Aerospace Engineering, Nanyang Technological University, 50 Nanyang Avenue, 639798 **Singapore**

Area of Interest: biomedical engg; computational fluid dynamics and numerical heat transfer.

Mohammad Luqman, Chemical Engineering Department King Saud University Chemical Engineering Department, Riyadh, **Saudi Arabia**

Area of Interest: Polymer Nanocomposites, Polymer/Plastic, Ionomers, Nanocomposites.

Mohammad Valipour, Department of Irrigation and Drainage Engineering, College of Abureyhan, University of Tehran, Pakdasht, Tehran, **Iran**

Area of Interest: Surface and pressurized irrigation, Drainage engineering, Fluid mechanics, Heat transfer in soil media.

Najm Obaid Salim Alghazali, Department of Civil Engineering, Babylon University, Hilla, Babylon, **Iraq**

Area of Interest: Hydraulic Structures, Hydraulics, Engineering Hydrology, Groundwater Hydrology, Dams Engineering.

Sushant K. Singh, Earth and Environmental Studies Department, Montclair State University, Montclair, 07043, New Jersey, **USA**

Area of Interest: Environmental pollution, Environmental management, Environmental toxicology, Environmental policy.

Hongseok Choi, Department of Mechanical Engineering, Clemson University, 205 Fluor Daniel Bldg. Clemson, SC 29634 **USA**

Ling Zhou, National Research Center of Pumps, Jiangsu University, No.301 Xuefu Road, Zhenjiang, Jiangsu 212013, **China**

Area of Interest : Fluids Engineering, Multiphase flow, CFD (Computational Fluid Dynamics).

Dr. Jongwan Kim, Al-Farabi Kazakh National University, Almaty, Kazakhstan, Senior Lecturer

Area of Interest : Computer and network security, it management, digital forensics, cryptocurrency, blockchain

Marlen Bissaliye, Al-Farabi Kazakh National University, Almaty, Kazakhstan, Senior Lecturer

Area of Interest : Computer and network security, it management, digital

forensics, cryptocurrency, blockchain

[UP]

© All rights are reserved with **Research India Publications**
[Journals](#) [Contact](#)

[Home](#)

International Journal of Applied Engineering Research (IJAER)

Volume 10, Number 18 (2015)

CONTENTS

[Image Compression, ECG Data Compression and Image Encryption by Binary versions of Discrete Cosine Transform, Haar Transform and Discrete Hartley Transform](#)

pp 38638-38642

P.Ramesh, B.I.Neelgar and B.M.S.Sreenivasa Rao

[An Optimal Weighted Fuzzy Rule Mining Classification On Multidimension Data Stream](#)

pp 38643-38651

P.Velvadivu and C.Duraisamy

[Intelligent Gesture Controlled Automation](#)

pp 38652-38656

Vishesh N Pamadi, Debashish S Sanyal and Gautam Reddy

[Intelligent Placement of Multiple DG's in Distribution Networks for Loss Reduction, Reliability and Voltage Improvement using IPSO](#)

pp 38657-38663

S. Jayalakshmi and V. Balaji

[A Low-Power Sensor Processor with a Approximation-based Fractional Wakeup Timer for Long-Term Sleep of Wearable Sensor Devices](#)

pp 38664-38670

Daejin Park and Jeonghun Cho

[Quality Management in Information System Development Units – An Empirical Study](#)

pp 38671-38678

Murugavel R

[A Novel Approach For Performance Testing On Web Application Services](#)

pp 38679-38683

B.Shyaamini and M.Senthilkumar

[Evaluation of Integrated Hyperbolic Tangent and Gaussian Kernels Functions for Medical Image Segmentation](#)

pp 38684-38689

Nookala.Venu and B.Anuradha

Thor-Fd: The Hierarchial Online Ranking Fraud Detecting For Mobile Apps Using Sentiword Dictionary

pp 38690-38692

Tamilmani.G, K.Rajathi, K.Antony kumar and Durai.S

Numerical study on the heat dissipation of a vacuum compatible motor

pp 38693-38697

Chan Byon and Juhee Lee

Analysis of mechanical stresses caused by the hydriding of Zr (Ni_{0.75}V_{0.25})₂ alloy

pp 38698-38703

M. Boulghallat, A. Jouaiti, L. Laâllam and D. Dafir

Improving Software Quality through Effective Software Testing

pp 38704-38707

B.Saravanan and C.S.Ravichandran

A Novel Zero Knowledge Protocol based on Bin Packing Problem

pp 38708-38713

Debajit Sensarma and Samar Sen Sarma

1D and quasi-2D numerical models of the cathode temperature in steadystate magnetoplasmadynamic thrusters

pp 38714-38719

Thada Suksila

Optimizing the Lighting System in a Commercial Railway Depot Using Energy Audit Technique

pp 38720-38723

M. Arun Govind, K. Gopinath, N. Kamaraj, Sa.K. Vishnoo Prathap, and S. Sendilvelan

Efficiency Enhancement of PV based Dynamic Voltage Restorer using Zeta converter

pp 38724-38728

P.Rajakumar, R.Saravanakumar and R.Thirumalaivasan

Supervised Machine Learning Techniques For Predicting The Risk Levels Of Gestational Diabetes Mellitus

pp 38729-38732

Srideivanai Nagarajan, RM. Chandrasekaran and P. Ramasubramaniam

Development Of Ecological Monitoring System Of Environmental Energy Pollution

pp 38733-38740

Marina Vladimirovna Grafkina, Boris Nikolaevich Nyunin and Evgeniya Yurevna Sviridova

Speaker Identification and Spoken word Recognition in Noisy Environment

pp 38741-38745

Shaik Shafee and Prof. B.Anuradha

Experimental Investigation on Dynamic Characteristics of Unidirectional and Woven Glass Fiber Laminated Composite Plates With and Without Cut-Outs

pp 38746-38752

Manoharan. R

HVOF Spray Parameter Optimization to Obtain Maximum Hardness and Minimum Porosity in WC-Co-Cr Coatings on AISI 304 Stainless Steel

pp 38753-38765

M.S.Sampath Kumar, K.P.Arulshri and C.Thirumoorthy

A Critique on Authentic Materials for Effective ESP Materials Design

pp 38766-38768

A. Rajesh and SarikaTyagi

Network Route Optimization

pp 38769-38773

Anand Kumar and S. Thulasi Krishna

The Thickness and Firing Duration Dependence of Titanium Dioxide (TiO₂) Nanoparticle Against to the Output Power of Dye-sensitized Solar Cell (DSSC)

pp 38774-38777

Muslichin, Amiril Mu'minin, Adabina Husna Yuriz Fridasavema, Muhammad Aulia Rahman Sembiring, Cindy Mutiara Septani and Eka Maulana

Deployment and analysis of Fingerprint Data using cloud services

pp 38778-38784

Harneet Kaur, Sukhjit Singh Sehra and Sumeet Kaur Sehra

Low Power Datapath Architecture for ANN

pp 38785-38789

S N Prasad and S Y Kulkarni

Effects of perceived organizational support on job commitment for research engineer

pp 38790-38793

K. Y. Song and H. Lee

Digital Signed Mash up Security Framework

pp 38794-38797

N. Angel, R. Ilavarasan and A. Chandrasekar

Indoor Object Tracking Using Low Energy Bluetooth Module

pp 38798-38801

Shoban Narayan. R and Varshini TN

Stress Analysis of Inlet Pigtail Pipe Bend under Internal Pressure due to Ovality

pp 38802-38807

P.Ramaswami and P. Senthilvelmurugan

Research of digital signal processing methods on the basis of the wavelet transformation for signal processing from a position sensor of the angle-component solvers

pp 38808-38811

Kovtun D.G, Sinyutin C.A, Prokofev G.V, Stakhin V.G and Obednin A.A

Semantic Based Image And Video Retrieval Techniques: A Comparative Study

pp 38812-38819

S.Suguna and C.Ranjith Kumar

Dynamic Clustered Mobile Ad-hoc Network Model to Enhance Internet Access for Heterogeneous Devices

pp 38820-38828

Udai Shankar and Rakesh Kumar

An Enhanced Data Cleaning Approach for Data mining Using Neural Network Methods

pp 38829-38833

Agusthiyar.R and K. Narashiman

Interface Behavior between Normal Concrete and Fibre Reinforced High Performance Concrete

pp 38834-38841

Tara Bobby and Nivin Philip

Mechanism Selection of Subsidized Diesel Oil Pricing Policy in Indonesia Using Analytic Network Process

pp 38842-38844

Irfana Hardiati, M. Dachyar and Yadrifil

Optimization the Volume of Business Services for Companies-residents in Linear Model of Technology Park

pp 38845-38850

A. Maltseva, Ilya Lesik and Aleksandr Perevozchikov

Security of Shared Data through Efficient Data Revocation in Financial

Market**pp 38851-38854****Krishna Kumar Singh, Priti Dimri and Himanshu Pathak****Bee-Inspired Routing the ultimate routing process for Energy Efficient MANET****pp 38855-38862****Sasmita Mohapatra and M.Siddappa****Finding the best suited classification function to analyze the association of students debugging skills with Trait Emotional Intelligence****pp 38863-38872****V. Maria Antoniate Martin and K. David****Development of a Three Dimensional Code based on Diluted Perfect Difference and Multi-Diagonal Codes for OCDMA Systems****pp 38873-38879****Rasim Azeez Kadhim, Hilal Adnan Fadhil, S. A. Aljunid and Mohamad Shahrazel Razalli****CODED EKSTRAP Clustering Algorithm****pp 38880-38884****Terence Johnson, Santosh Kumar Singh and Valerie Menezes****Design Optimization To Increase A Cross Flow Turbine Performance: A Review****pp 38885-38890****Rudy Soenoko****Fuzzy model of temperature control in the bread-baking chamber****pp 38891-38897****V.I. Finaev, E.D. Sinyavskaya, V.Yu. Evtushenko, V.V. Shadrina and S.V. Vasilenko****Control model of bread-baking oven under uncertainty****pp 38898-38904****V.I. Finaev, E.D. Sinyavskaya, V.Yu. Evtushenko, S.V. Vasilenko and I.V. Pushnina****Comparison Of Voltage Profile Improvement using Structural Characteristics based method with Modal Analysis method****pp 38905-38912****J.Vanishree, Srihari Mandava, V. Ramesh****Behavior of Expansive Soil under Water Content Variation and Its Impact to Adhesion Factor on Friction Capacity of Pile Foundation****pp 38913-38917****Daniel Tjandra, Indarto and Ria Asih Aryani Soemitro**

Horizontal and Vertical Packet Combining Scheme with maximum erroneous bits limit: Proposal and study

pp 38918-38922

Yaka Bulu, Yang Saring and Chandhan T Bhunia

Comparison of Two Dual Input DC-DC Converter Topologies for Renewable Energy Integration

pp 38923-38930

Sivaprasad A, Kumaravel S and Ashok S

Study of a photovoltaic system connected to the network with different technologies the panel PV centred

pp 38931-38936

Meriem Chadel, Boumediene Benyoucef, Asma Chadel3, Mohammed Bouzaki and Abdalah Benyoucef

Entropy-based fuzzy clustering to classify software quality: Comparison with Fuzzy C-Means clustering

pp 38937-38942

J. Pal and V.Bhattacharjee

Geo-Engineering Properties of Lime Stabilized Expansive Soil-Shredded Waste Tyre

pp 38943-38947

Akshaya Kumar Sabat

Internal Governance Mechanisms and Managerial Decision on Foreign Direct Investment in Korean Firms1

pp 38948-38954

Wonyong Choi and Shinae Kang

Assessment of Awareness of Livestock-Vehicle Traffic Accidents in Dhofar Region, Oman

pp 38955-38959

A. M. Abu Abdo and A. A. Al-Ojaili

Recursive Synthesis Framework of On-ChipMask ROM Circuits for Scrambled Mask Pattern Generation of Binary Code

pp 38960-38966

Daejin Park

Influence Of Ultrafine Natural Steatite Powder On Strength And Permeability Of High Performance Concrete

pp 38967-38971

M. Shanmugasundaram, S. Karthiyaini and K. Sudalaimani

The Effect of Impeller Meridional Shape and Vane Curvature

Modifications in a Mixed Flow Submersible Borewell Pump

pp 38972-38976

C. Murugesan and R. Rudramoorthy

The Effect of Smartphone Addition, Parenting Efficacy, Antenatal Stress and Fatigue on Depression among Pregnant Women

pp 38977-38983

Soon Jung Yoon and Hee Kyung Kim

Experimental Investigation Of Using N-Hexanol As Additive To N-Butanol/Diesel Blends In Diesel Engine To Study The Emission And Performance Characteristics

pp 38984-38988

Vigneswaran M and Thirumalini S

Mathematical Competencies in Higher Education in Oman: A Critical Review

pp 38989-38994

Sonal Devesh

Design of Special Purpose Machine for Counter boring Operation on the hub of a impeller blade

pp 38995-38999

Arvind Kannan and Vinayagamurthy Ganesan

Framework for Language Independent Stemmer Using Dynamic Programming

pp 39000-39004

M. Kasthuri and S. Britto Ramesh Kumar

The Aesthetic View of Digital Games: Following the Concept of Heidegger's Art Theory

pp 39005-39007

Taeyeon Kim and Junghwan Sung

Adaptation on IC Engine driven bike into Electric engine driven bike using retrofit techniques

pp 39008-39012

S. Devaneyan and V. Kirubakaran

A Study on Hierarchy according to the Spatial Configuration of Nurse Station in Geriatrics Hospital

pp 39013-39018

GangminJeon, Heangwoo Lee and Yongseong Kim

Hammerstein Type Decision Feedback Equalizer For Compensating Wiener Type Nonlinear Channels

pp 39019-39023

L.Jibanpriya Devi, Shailendra Kumar Mishra, M.Kalaiarasan and Vijay Albert William

[Analysis on Main Parameters of Fire Service Deployment of 119 Recue Center Using Spatial Information](#)

pp 39024-39029

Ji-Soo Lee, Seung-Yeob Lee and Won-HwaHong

[Construction of a Simplified Software Defined Networking \(SDN\) Test-Bed](#)

pp 39030-39033

Sanjeev Rao Palamand and Shakthipriya P

[Comparison Research on the Characteristics of Architectural Plans per Change in Administrative Clients of Newly-Established Elementary Schools in Sejong City, Korea](#)

pp 39034-39043

Dong-hoon Chang and Jin-ju Jung

[Effects of Engagements of Parents of Disabled Children in Leisure Activities on their Sense of Depression](#)

pp 39044-39047

Gi-Sun Kim and Sung-Je Cho

[Optimization of Honda Algorithm for Rear End Collision Avoidance System with Particle Swarm Optimization](#)

pp 39048-39052

Manjunath K.G and N. Jaisankar

[A Characteristics through the Exterior Space of Mixed-Use Residential Tall Buildings](#)

pp 39053-39057

LeeYong Sung

[Design Optimization of a Pico Linear Permanent Magnet Generator with Novel Shaped Magnet for Wave Energy Conversion using Finite Element Analysis](#)

pp 39058-39065

Aamir Hussain Memon, Taib bin Ibrahim and Perumal Nallagowden

[Study on the Comparative Analysis of Criteria Conformity of Road Facilities and Inconvenience from Them for the Vulnerable and Non-vulnerable](#)

pp 39066-39070

Young-wooLee

[An Algorithm for deskewing a Document Image](#)

pp 39071-39073

Prof Akila Victor, Gurleen kaur brar and Sanyam Seth

[Analysis of the Usability of a Traffic Guide Robot on a Road Work Zone using AHP](#)

pp 39074-39077

Young-wooLee

[Cervical Cancer Detection through Automatic Segmentation and Classification of Pap smear Cells](#)

pp 39078-39084

Sajeena T A and Jereesh A S

[A study on the hierarchy in spatial configuration of outpatient department in general hospital through spatial distinction theory: Focusing on general hospitals located in Korea](#)

pp 39085-39090

Sangwon Oh, Heangwoo Lee and Yongseong Kim

[Graph Based Test Case Generation](#)

pp 39091-39100

V.Vani, G. S. Mahalakshmi and Betina Antony J

[A Study on the Algorithm for Building Envelope Design in accordance with Urban Data by Scattered Data Interpolation](#)

pp 39101-39104

Jinho Park and Woo-HyoungLee

[Boundary Detection in Medical Images Using Bonding Box Based Contour Method](#)

pp 39105-39108

B. Jyothi, Y. MadhaveeLatha and P. G. Krishna Mohan

[A Study on the Block unit architectural plan for Taepyeongdong Housing regeneration-focused on the original part of Seongnam city](#)

pp 39109-39114

Young Lee

[Development Of An Improved Scheduling Scheme For Multicast Traffic Delivery Over Wimax Networks](#)

pp 39115-39121

A.D. Usman, S.M. Sani and Aliu D

[Estimation of Construction Waste Amount Generated by Demolition of Deteriorated Singlefamily Housing](#)

pp 39122-39125

Seung-chan Baek, Young-chan Kim and Won-hwa Hong

[An Enhanced and Productive Technique for Privacy Preserving mining of](#)

Association rules from Horizontal Distributed Database

pp 39126-39130

Sreevidya. B

A Study on Changes of Slate Buildings' distribution in Korea using GIS -Case Study of Gang-won Province-

pp 39131-39137

Su-Young Kim, Young-Chan Kim, Byeung-Hun Son and Won-Hwa Hong

Current ISBN System – Learning & Practicing via Simulation

pp 39138-39144

A.AHMAD, M. A. K. RIZVI, N. MOHANAN and S. AHMAD

Community Space Reflected in Park Taewon's Novel, "Riverside Landscape" on Seoul

pp 39145-39149

Hae-yeon Yoo

Heap Sorting based Node Exchange and Detect Failure Node Recovery in wireless sensor Actor Networks

pp 39150-39156

C. A. Subasini and Chandra Sekar A

Cost Efficiency of Foreign Banks in India with Information Technology (IT) Investments- A Stochastic Frontier Approach (SFA)

pp 39157-39162

S. T. Surulivel, S. Selvabaskar, R.Alamelu and L. Cresenta Shakila Motha and R.Amudha

Availability Evaluation of Unmanned Aerial Vehicle for the Cadastral Confirmation Survey

pp 39163-39167

Joon-Kyu Park and Dae-Wook Park

Solution of Differential Equations by Three Semi-Analytical Techniques

pp 39168-39174

A. A. Opanuga, O. O. Agboola, H. I. Okagbue and J. G. Oghonyon

Application of the Coordinate Transformation for Cadastral Resurvey Project

pp 39175-39178

Joon-Kyu Park and Dae-Wook Park

Energy efficient distributed flooding time synchronization Protocol for Heterogeneous WSN's

pp 39179-39183

Harshjit Singh, Er.Parminder Singh and Er.Vikram Dhiman

Application of Construction Management using Robotic Total Station and BIM Technology

pp 39184-39187

Joon-Kyu Park and Dae-Wook Park

The Assistance of Surfactant to Alcohols in Reduction of Soy-Polyurethane's Water Absorbency

pp 39188-39191

F.E. Firdaus

Availability Evaluation of the Smart Phone Application for the Topographic Surveying

pp 39192-39195

Joon-Kyu Park and Dae-Wook Park

Preparation and Characterization of Self-Compacting Concrete Containing Lime Stone powder

pp 39196-39200

D. A. Najm, N. Begum and K. N. Ismail

Time Series Analysis of Land Cover and Land Surface Temperature Change using Remote Sensing Method in Seoul

pp 39201-39207

Joon-Kyu Park and Dae-Yong Um

Comparison Of Case Based Reasoning And Support Vector Machines Algorithm

pp 39208-39210

Ponni. J and Shunmuganathan. K. L

Analysis of Change about Reclaimed Land using Landsat Satellite Images of Time Series

pp 39211-39216

Jong-Sin Lee and Hee-Cheon Yun

A New Chaotic Algorithm For Image Encryption And Decryption Of Digital Color Images

pp 39217-39222

M. Surya Bhupal Rao and V.S. Giridhar Akula

Analysis of Land Surface Temperature Corresponding to Biotop Index for Eco-friendly Urban Management

pp 39223-39227

Jong-Sin Lee and Hee-Cheon Yun

Review of Light Fidelity Technology for Wireless Communication

pp 39228-39231

P. G. Kuppusamy, S. Kannan, S. Bharath Kumar and G. Arunraj

Establish of the Image Color Extraction Algorism for Selective Classification of LiDAR Point Cloud

pp 39232-39238

Yong-Hyun Song and Dae-Yong Um

Experimental investigation of Surface roughness of cylinder liner for HT 100 material using RSM Technique

pp 39239-39246

B.N.Tripathi and N.K. Singh

A Study on Improvement Plans for Evacuation and Information communication Method through the Awareness Survey of Flood Damage

pp 39247-39252

Ji-Eun Sun, Ji-Soo Lee and Won-Hwa Hong

Insulin Attenuates Gene Expression of Inducible Nitric Oxide Synthase during Hemorrhagic Shock in Rats

pp 39253-39256

Jihwan Bu, Chang Bae Park and Woo Jeong Kim

Texture Based Watershed 3D Medical Image Segmentation Based on Fuzzy Region Growing Approach

pp 39257-39265

Rajaram M Gowda and Lingaraju G M

Can the optic nerve sheath diameter in brain magnetic resonance imaging be a predictor of elevated intracranial pressure

pp 39266-39268

Jeongho Kang, Woo Jeong Kim, Young Joon Kang and Su Jin Kim

Incremental Spammer Feature Extraction for the Spam Detection in Social Networking Service

pp 39269-39273

Jin Seop Han and ByungJoon Park

Model and Implementation of a Financially Converged Transportation Management System

pp 39274-39277

Hee-Yong Kang, Hyeon-Kyung Lee, Yong-Lak Choi, Yongtae Shin and Jong-Bae Kim

Design and Development of Fuzzy Logic Based Solar Panel Tilting Mechanism for Automobiles

pp 39278-39280

M. Harikrishnan, Sai Preetham Sata, B. Vikas Reddy and P. Sateesh Kumar Reddy

Big Data Analysis System Model using Field Data**pp 39281-39284****Jae-Joong Kim, Baek-Min Seong, Min-Gyu Lee, Hyo-jung Sohn and and Jong-Bae Kim****Stabilization of switched linear systems using differential evolution algorithm****pp 39285-39289****Housseem HOSNI, Walid BEN MABROUK and Nouredine LIOUANE****A study on Penetration testing methodology****pp 39290-39293****Yong-Suk Kang, Hee-Hoon Cho, Yongtae Shin and Jong-Bae Kim****A study on the optimization of rectangular steel storage tanks****pp 39294-39301****I.Rohini, R.L.Lija, S.Minu and V.Arularasi.****A Study on Method of Calculating Cloud Computing Server Capacity for SaaS****pp 39302-39306****Kook-Hyun Choi, Yang-Ha Chun, Se-Jeong Park, Yongtae Shin and Jong-Bae Kim****A study on the Performance test of swash plate compressor in vehicle****pp 39307-39310****Seo Hyun Sang and HaengMuk Cho****Effects of Organizational Commitment and Job Description of Childcare Staff on their Life Satisfaction-Around O-Gu, Ulsan****pp 39311-39314****Dong-Hyun Kim and Jae-Mo Lee****Performance Evaluation of Merge and Quick Sort using GPU Computing with CUDA****pp 39315-39319****Neetu Faujdar and SP Ghrera****A Study on Comparison of Attitude and Problem Solving Ability in Students and Teachers through Global Connected Learning Based on Smart Education****pp 39320-39323****Youngkwon Bae, Seungki Shin and Meeyong Kim and Ikseon Choi****Image Encryption Algorithm Based on Graph Coloring****pp 39324-39333****D. Sathya srinivas and S. Veni**

Pubertal Timing, Subjective Health, and Suicidal Behaviors in Korean Adolescents

pp 39334-39337

Ju-Young Ha, So-Hee Kim, Hye-Young Choi and Young-Mi Ahn

The Influence of Knowledge Management Practices and Systems on Firm Performance

pp 39338-39344

Y. K. Santosh, J. Dennis and Dr. J. Nasina

A Study on Sino-Korean Word Usage Aspects as Subjects of Articles in Online Newspapers and Traditional Newspapers

pp 39345-39348

Hyuk Suh, Soon-hee Kwon, Jung-woo Kim, Eun-sung Kim and So-yeon Chung

Secure Sharing Of Data In Private Cloud Using Oaep Algorithm

pp 39349-39353

S. Selvakumar, and A. Rengarajan

A Study on the Sustainable Classical Literature Education Based on the Knowledge Reproducing Process of Learners

pp 39354-39357

So-yeon Chung and Yong-ran Hyun

Detection of Fatigue Crack Initiation in a Spot-welded Joint by Monitoring its Compliance

pp 39358-39365

S. J. Chu, T. K. Jeong and K. J. Hwang

Study on the Positive Psychological Capital, Organizational Commitment and Job Stress

pp 39366-39371

Kyung-Sun Han and Kyung-Hee Chung

A Review On Effect Of Admixtures On Durability Properties Of Concrete

pp 39372-39377

Sumi Joy and Nivin Philip

Dietary Behavior, Nutrition Knowledge and Health Status by meals intake or skipping in University Students

pp 39378-39386

Tae Kyung Kim and Hye Jin Kim

Substantiation of the Composition and Structure of the Economic-Mathematical Model of Forecasting and Assessment of the Socioeconomic Efficiency of the Investment and Construction Projects

pp 39387-39394

Elena Mikhajlovna Akimova and Dmitriy Vladimirovich Knyazev

[Antibacterial effect of the Lonicera japonica extract on oral microorganisms](#)

pp 39395-39397

Myoung-Gun Choung, Seoul-Hee Nam and Hye-Young Kim

[Features of formation of the system of innovative development of the industrial enterprise](#)

pp 39398-39403

A.N. Melnik, O.N. Mustafina and A.R. Sadriev

[The Quantitative Risk Assessment for Distributed Denial of Service Attacks](#)

pp 39404-39407

Tae Kyung Kim

[Design of high level railway embankment under constrain site conditions](#)

pp 39408-39412

Rakesh Kumar, Pradeep K. Jain and Pratik Parmar

[Relationships among the Involvement on Luxury Goods, Satisfaction, Trust, and Buying Behavior: Comparison of Types of Internet Shopping Malls](#)

pp 39413-39415

Sora Kang, Jounghae Bang and Min Sun Kim

[Implementation of Near-Threshold gates at 45nmTechnology](#)

pp 39416-39421

N. Geetha Rani and P. Chandrasekhar Reddy

[Terahertz Responses of Iron Oxide Nanoparticles](#)

pp 39422-39424

Ki-Chul Kim

[Dynamic channel allocation using Mutually Orthogonal Latin Squares in wireless sensor networks](#)

pp 39425-39430

S. Elamathy and S. Ravi

[A study on the factors that influence oral health status of college students](#)

pp 39431-39433

Hae Young Kim, Young Min Lee and, Jeong Min Seong

[Frame Work For Video Content Management](#)

pp 39434-39438

Sanjeev Thakur and Sanjeev Bansal

The Relationship between Post-traumatic Stress and Quality of Life in 119 ambulance workers

pp 39439-39442

Sang-Yol Shin and Sung-Soo Choi

An Elliptic Curve Cryptography based adaptive and secure protocol to access data outsourced to cloud server

pp 39443-39450

D.Sudha Devi and K. Thilagavathy

Analysis of Positioning Performance about VRS and RTK

pp 39451-39453

Min-Gyu Kim and Dae-Yong Um

Trends and Implications of Bilingual Education for Minority Language Students in the US

pp 39454-39457

MyungHee Kim

An Isolated Voltage regulator with boost circuit for Variable DC sources

pp 39458-39462

Sarath.K.S and Edgar Ruskin Frank

Applicability Evaluation of Ortho Image and 3D Digital Surface Model about Golf Course

pp 39463-39465

Keun-Wang Lee

Refining of Numerical Solution for Nonlinear Transient Heat Conduction in a Plate Made of Polymer Composite Material

pp 39466-39469

V. M. Kudoyarova and V. P. Pavlov

Analysis of Crustal Movement Velocity After the Great Earthquake using GNSS

pp 39470-39472

Min-Gyu Kim, Kap-Yong Jung, and Dae-Yong Um

Selection and Implementation of a Set of Key Performance Indicators for Project Management

pp 39473-39484

G. Montero, L. Onieva and R. Palacin

Decision Feedback Channel Equalization for a Wireless Access in Vehicular Environment System

pp 39485-39487

Dae-Ki Hong

[Review of Drag Reduction Techniques for Hypersonic Flows](#)

pp 39488-39495

Bibin John and Vinayak Kulkarni

[Photoelastic Measurements for Mixed Mode Stress Intensity Factors of an Inclined Crack in a Tensile Plate](#)

pp 39496-39500

Tae-hyun Baek, Myung-soo Kim, Young-chul Kim and Chun-tae Lee

[Learning Bilingual Lexica from Non-parallel Comparable Corpora Using Perceptron Learning](#)

pp 39501-39508

Jae-Hoon Kim, Hyeong-Won Seo and Hong-Seok Kwon

[Analysis of Automotive Seat with Load and Vibration Transmitted due to Motor Position](#)

pp 39509-39517

Jae Ung Cho

[Reduction of seismic response uncertainty by the introduction of dampers in civil engineering structures](#)

pp 39518-39521

B. Benahmed and M. Hammoutene

[A Study on Structural and Thermal Durability for the Types of Brake Pad and Shoe](#)

pp 39522-39527

Jae Ung Cho

[SEEHPIP: Secure Energy Efficient Homomorphism based Privacy and Integrity Preserving Data Aggregation for Wireless Sensor Networks](#)

pp 39528-39535

H. S. Annapurna and M. Siddappa

[A Study on Formation of Anodic Oxidation Film on Type 60 Aluminum Alloy Followed by Difference of Pretreatment](#)

pp 39536-39540

Sung-Il JEON

[Performance Comparison of Six phase PMSM Drive system by Using Conventional PI and Fuzzy Logic controller](#)

pp 39541-39546

Anurag Singh Tomer and Satya Prakash Dubey

[An Approach of Data Aggregation base on A Geographic Cluster for Underwater Wireless Sensor Networks](#)

pp 39547-39549

Khoa Thi-Minh Tran and Seung-Hyun Oh

[Intelligibility Of Speech Using Short Time Fourier Transform Phase Spectrum](#)

pp 39550-39557

Prabhavathi C. N and K. M Ravikumar

[A Radiation Detection Wireless Sensor Networks in the Nuclear Power Plant](#)

pp 39558-39561

Seung-Hyun Oh

[Energy Efficient Clustering Mechanism for Virtual MIMO Communication in Wireless Sensor Networks](#)

pp 39562-39569

ACHYUT SHANKAR and N JAISANKAR

[Polynomial Multiplication Method Using the Modified Cooley-Tukey FFT Method for Next-Generation Cryptography](#)

pp 39570-39574

Sangook Moon

[Relationship Between The Discharge Of Sewage And Of Drainage In The Wadi Righ Channel And Groundwater On The Degradation Of Palm](#)

pp 39575-39583

S. Benguergoura Laradj and B. Remini

[Life experience of Korean men who married immigrant women through international marriage](#)

pp 39584-39589

Eun Sil Jung, Hye Jin Kim, Eun Kwang Yoo and Yeun Mi Kim

[The Spiritual Intelligence And Its Relationship With Employee's Perception Of Organizational Justice](#)

pp 39590-39596

Masoumeh Esmaeili, Seyed Yaghoub Hosseini and Seyed Abbas Mousavi

[Impact Of Social Welfare Center Users' Participation In Cultural Activity On Satisfaction With Life With Focus On Stress Management Approach](#)

pp 39597-39600

Hyeong-Seok Seo and Sung-Je Cho

[To the question of geodetic and cartographic provision of cadastral register](#)

pp 39601-39602

A. P. Karpik, E. I. Avrunnev and A. E. Truhanov

[Impact of social welfare center users' utilization of social care facilities](#)

on the mental state

pp 39603-39606

Hyeong-Seok Seo and Sung-Je Cho

Techniques for Software Design Validation: A Survey

pp 39607-39610

Sumangala patil, A. Nagaraja Rao and C. Shoba Bindu

Study on the Self-Esteem and Physical Symptoms of the Elderly in Nursing Homes in Relation to the General Characteristics

pp 39611-39614

Jung-Hee Choi and Sung-Je Cho

A Bio-Inspired Optimized Path Detection (OPD-BA) Routing Protocol for Mobile Ad-hoc Networks

pp 39615-39620

Konduri.Sucharitha and R. Latha

A Study on the Influence of Support of Surrounding Environmental Factors on the Dangerous Behaviors of Adolescents - Moderating Effect Analysis of Responsibility and Self-Esteem -

pp 39621-39624

Deok-Jo Kim and Sung-Je Cho

A Framework for Semi Semantic Ontology Based Document Clustering in Geospatial Domain

pp 39625-39630

A.SASI KUMAR, S.P. TAMIZHSELVI and G. SUSEENDRAN

Effects of Satisfaction with Leisure Activities of Parents of Disabled Children on their Sense of Depression

pp 39631-39634

Gi-Sun Kim and Sung-Je Cho

The Effect of Land Consolidation to Changes in The Most Extensive Puddle in Semarang-Indonesia

pp 39635-39641

Pratikso and Soedarsono

The Influence that a Female Volunteer's Motive of Participation and the Characteristics of the Volunteer Activity have on the Sustainability of the Volunteer Activity

pp 39642-39646

Hee-Jin Kang and Sung-JeCho

The Method for Control of the Energy Efficiency of Chain Transmissions

pp 39647-39653

K. Kozlov, A. Egorov and V. Belogusev

[A Study on the Influence of Maternal Depression on Parenting efficacy](#)

pp 39654-39656

Jae-Young Kim and Sung-Je Cho

[Extension of PROMETHEE V Method for Project Portfolio Selection and Scheduling](#)

pp 39657-39662

T. Heydari, S-M. Seyedhosseini and Ahmad Makui

[The effect of happiness of mothers with children in their infancy on emphatic abilities](#)

pp 39663-39669

Geun-hye Jeon and Sung-je Cho

[Automatic Determination of Pathological Voice Transformation Coefficients](#)

pp 39670-39674

H. Belgacem, L. Salhi and A.Cherif

[A Study on the Correlation Between the Self-Esteem of Parents of Infants and their Ability of Empathize](#)

pp 39675-39678

En-Young Lee and Sung-Je Cho

[Hybrid DTCWT-SVD based video watermarking scheme for protecting rightful ownership using Improved Artificial Bee Colony Algorithm](#)

pp 39679-39688

Anjaneyulu Sake and Ramashri Tirumla

[The Influence of a Child's Emotional Intelligence on their Self-Esteem Centered on OO-Gu, Ulsan City](#)

pp 39689-39695

Pil-Yeon Kim and Sung-Je Cho

[A Systematic Literature Review: Recent Trends and Open Issues in Software Refactoring](#)

pp 39696-39707

Sreeji K. and C. Lakshmi

[ProductEffect of Children's Kindergarten Adaptation on Peer Interaction Centered Around OO City of Gyeongsangnam-do](#)

pp 39708-39713

Geun-hye Jeon and Sung-je Cho

[Feature Detection Using Dimensionality Reduction](#)

pp 39714-39716

Brindha.T.Sambandam and Josephine

The Influence of a Child's Self-Esteem on their Communication Skills Centered on OO-Gu, UlsanCity

pp 39717-39723

Pil-Yeon Kim and Sung-Je Cho

Optimization of Real-Time Video Over 3G Wireless Networks

pp 39724-39730

A.S.Syed Navaz, P.Jayalakshmi and N.Asha

Effect Of Private Tutoring On Life Satisfaction Of Adolescents Mediated By Self-Regulated Learning Ability And Academic Achievement

pp 39731-39734

Ji-HaeKim

Experimental and Numerical Analysis of Air Preheater for Waste Heat Recovery of CI Engine using different fin type

pp 39735-39744

P. P. Patnaik, S.K.Acharya, H.C.Das and MD.AYUB Ansari

Differences in Financial Well-being of Users of Social Welfare Institutions by Housing Tenure Type

pp 39745-39750

Dong-ho Jang

IangIdentification of the edge corner deflection related to the process variables on the glass edge sealing using double torch

pp 39751-39754

Dong Min Lim, Youngshin Kim and EuySikJeon

Weight minimization of Spring design problem using PSO, SA, PS,GODLIKE, CUCKOO, FF, FP, ALO, GSA and MVO

pp 39755-39759

Christu Nesam David. D, S.Elizabeth Amudhini Stephen and Ajay Joe, A

Development of Camping Equipment with Carbon Nanotubes and Management Strategy

pp 39760-39762

S. Lee and Y. Lim,

Discovering useful Patterns in Text Mining using AMLNS-GA Algorithm

pp 39763-39767

I. Berin Jeba Jingle and J. Jeya A. Celin

ATC Enhancement through optimal placement of UPFC using WIPSO Technique

pp 39768-39774

R. Sripriya and R. Neela

Study Assessment on Occupational Safety and Health in small scale foundry environment

pp 39775-39779

N. Nandakumar and M. Arularasu

Characterization and Analysis of Z Pinned Bi directional CFC using Minitab 17

pp 39780-39788

J Dhanraj Pamar, B Balu Naik, D Ramana Reddy and H Krishnamurty Dora

Privacy Preserving Clustering process with Cost minimization for Big Data Processing

pp 39789-39794

V. S. Thiagarajan and K. Venkatachalapathy

MEMS Sensors Based Cancer Detection System

pp 39795-39798

Reena Sebastian and NJR Muniraj

Efficient Multiplication in Finite Field for FPGA Design of EC Cryptosystem

pp 39799-39802

Ashkar Mohammed M and S. Suresh Babu

Sylvester Matrix Theorem an Ideal Tool in MIMO Channel Estimation

pp 39803-39807

Vikash Sharma and Sanjay Kumar

Relative Analysis of Sizing Methods in the sense of E-Commerce system

pp 39808-39816

John T Mesia Dhas and C.R. Bharathi

A novel label fusion technique for segmenting subcortical brain structures using multi-atlas and multi-graphcuts

pp 39817-39821

R. Neela and R. Kalaimagal

Regression Testing Using Aigrtp Algorithm For Industries

pp 39822-39827

K. Hema Shankari and R. Thirumalai Selvi

Secure and Reliable Group Communication in Mobile Ad Hoc Networks

pp 39828-39832

S. Manohar and S. Selvakumar

Improved ECG signal denoising by using an EMD-based algorithm

pp 39833-39840

G. Sreedevi, B. Anuradha and T. Sreenivasulu Reddy

Test Suite Reduction Mechanisms: A Survey

pp 39841-39848

A.D.Shrivathsan, K.S.Ravichandran and K.R.Sekar

A Fuzzy Approach To Three Stage Flow Shop Scheduling Model Including Job Block Criterion Using Branch And Bound Technique

pp 39849-39852

K. Thangavelu, G. Uthra and S. Shunmugapriya

Test Data Compression Techniques Emphasizing Linear Decompressor Based Schemes: A Review

pp 39853-39857

S. Rooban and R. Manimegalai

[\[UP\]](#)

© All rights are reserved with Research India Publications

[Home](#)
[Journals](#) [Contact](#)

The Assistance of Surfactant to Alcohols in Reduction of Soy-Polyurethane's Water Absorbency

F.E. Firdaus

Department of Chemical Engineering
Jayabaya University, Kav 23 Jakarta- 13201, Indonesia
flora_elvistia@yahoo.com

Abstract- Polyurethane foam are obtained by using soy- polyols, TDI: MDI (80:20), and surfactant. Soy-polyol is made using a low molecular weight of alcohol; methanol and ethylene glycol. The responses of ethylene glycol and methanol to silicon surfactant has produces a unique polyurethane. With the ability minimized water absorbency. The goals of this study is to determine the optimal conditions of using of methanol and ethylene glycol in soy-polyol synthesis as based substance for polyurethane formula. From this work we found a relation between foam reduction absorption to its morphology and the voids occurred, the shape of the surface of the foam, and the curing time of foaming. Optimal conditions of polyol synthesis is found at the ratio of epoxide/methanol is 1: 6 (mol/mol), and epoxide/Ethylene Glycol 1: 3 (mol/mol).

Keywords: Soy- polyurethane, surfactant, water absorbency

Introduction

Fears of supply of non-renewable natural resources has urged to using renewables material. Some research has explored and used various technological innovations as an effort to save environment [1]-[2].

Polyurethane has range of wide spectrum of polymer product from straight-chain polymers to thermosetting plastics. Structure and properties of polyurethane depends on density, hard and soft segments, and chemical compositions [3]. Previously synthesis of polyurethane were prepared from petroleum based-polyol. Due to the dwindling of oil supplies which affected to increasing prices and also increasing production cost [4]-[7], switching the raw materials into vegetable oil; a natural abundant resources and a promising material which can replace petroleum. Some advantages are having low toxicity, soluble, and high purity [8]-[10].

Unsaturated fatty acids in vegetable oil are plays an important role from the intermediates to final product. Fatty acid in soybean oil are constitute of palmitic acid 11%, stearic acid 4%, oleic acid 23%, linoleic acid 54%, and linolenic 8%. The combination of polyols, di isocyanate, and low molecular chain extender gives a multitude forms which suitable for extremely

different practical applications [11]. Advantages possessed of using vegetable oils, because are easily to be reshaped and tailormade, which can be made according to market needs. Flexible properties owned by soft segmented with the percentages is higher than hard segment. It occurred when ratio of polyol to isocyanate is greater than 1. Polyols will perform as soft segment while isocyanates forming hard segment.

The flexible foam can be made as necessary by adding a chain extender, polyol derived from a short chain polyhydroxy defined as low molecular hydrocarbons, if not using chain extenders it can be added polyhydroxy initiator [12]-[13].

Chain extender are generally low molecular weight of reactant which produces hard segment in polyurethane, this believed as the result from an increased intermolecular association or bonding induced. Based on the previous research the optimized oxirane number were 6.7% [14]. The optimized formulation were then implemented to the proceed steps.

This research were conducted an assessment of different polyurethane foam products synthesized from combinations of two low molecular weight alcohols; methanol is represented as monol, and ethylene glycol is represented as diol, where both type of alcohols are performed as chain extender in the syntesis with the assistance of surfactant. Furthermore, studied its value if as applied in a wet media, and whereas compared to polyurethane petroleum-based.

Experimental Procedures Materials

Polyols were synthesized in a 500 ml three-neck flask which equipped with reflux condenser. Two samples of are prepared for intermediate products; a) 85 mL of epoxide using methanol and b) 45 mL of epoxide using ethylene glycol.

The reaction respectively are catalyzed by acid catalyst with the concentration of 1% v/v.

The reaction temperature are designated at 1170C. The products obtained then neutralized, decantated, and filtered. Polyurethane were made by mixing polyols, TDI: MDI (80:20), surfactants, and blowing agent; distilled water. The mixture is then poured into the glass mold.

Method of Analysis

- Numbers oxirane; specify a group of oxirane oxygen obtained from the titration using HBr in glacial acetic acid.
- Water absorbency test: a sample that has been made in certain dimensions, dropped into a container soaked in distilled water for 20 minutes, then weighed.
- Density test: the sample that had been prepared in a particular dimension were weighed using an analytical balance, and then calculate the volume of dimension.
- Curing time: the time of polyurethane passing cream time phase, it expands until reached a stable form, then after minutes is observed

In making use of two types of soy-polyols, the product occurred from using methanol is referred as (P1) and using ethylene glycol (diol) is referred as (P2). Each (P1) and (P2) which then become as polyurethane (PU1) and (PU2).

Results and Discussion

Synthesis of Polyol

The optimized oxirane number of soy-epoxide were carried out as based oil which then used for proceed reaction for polyol synthesis. The synthesis were taken in two designated time of reaction; 1 hour and 2 hours. Overall this determination is to identify which of these two chain extenders, and surfactant at certain time reaction are resulted the best property of polyurethane products.

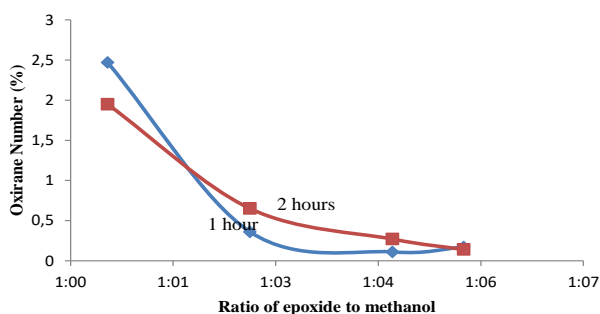


Fig.1. Soy-Polyol Occured Using Methanol

The expected oxirane number for polyol synthesis is the lowest among compositions. Each formula were conducted in triplo until it reached the stable average number. The best value of oxirane for methanol based were 0.14 mgr KOH/ gr at the ratio of epoxide/methanol 1:6 (mol/mol) at 2 hour reaction, as shown in fig. 1.

Polyol products will formed a reduction of oxirane numbers which increases active centers for polyurethane synthesis. The alcohols perform as chain extenders, it also sources of OH's which can elevate hydroxyl value; polyols will have more hands to bind isocyanate ions (SCN-). The optimum condition for polyol synthesis using ethylene glycol, is the ratio of epoxide/ethylene glycol 1:3 (mol / mol), whereas the oxirane number was 0.079% with 2 hours which is shown in Fig. 2 .

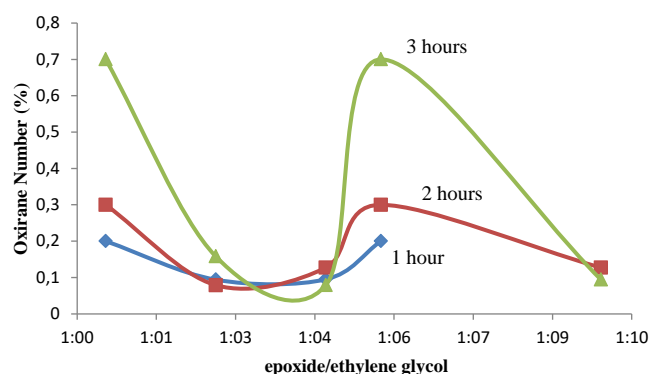


Fig. 2. Soy polyol Occured Using Ethylene Glycol

B. Curing time of polyurethane

The collaborative reaction of alcohols and surfactant bring out suitable condition, the outcome of foaming process of polyurethane product are read as curing time; is the phase of foam are perfectly developed, it may be takes a couple of minutes to being completely dried and safely to be appointed from the molding.

Evidently on this founding there is no significant differences of curing time of using methanol to ethylene glycol. Empirically proofed active sites of polyols ethylene glycol-based is larger than polyols methanol-based. As in average the curing time of methanol-based (P1) was 22.47 minutes, and ethylene glycol based (P2) was 20.9 minutes. This condition were considered to be as time efficiency in case it would realized to be manufacture in up-scaling or maybe in industrial scale.

The composition of unsaturated fatty acids accumulated in soybean triglycerides can affected to elasticity and foam deployment process. This research

finding were verified from previous study, with physical properties as can be seen in table 1.

Table 1. Characteristic of optimized polyol

Polyol Properties	Methanol	EG
Hdroxyl Number (mgr KOH/ gr)	578.9	308.5
Oxirane (%)	0.11	0.08
Viscosity (cps)	231.8	18.8
Functional	1	2
Colour	Pale Yellow	light brown

Source: (Firdaus, F.E, 2010)

Pore absorbency to water

These observations used polyurethane petroleum based as control. It was found the absorbency ability of polyurethane made from soy polyols is bigger than polyurethane petroleum-based. Overall pores of

Table 2. Water abosorbency

Type of sample	Foam Weight (gram)	Percentage of Absorbency	Average of Percentage
The synthesis without Surfactant			
Methanol	0.68	91.44	86.75
	0.59	81.44	
	0.58	87.4	
	0.54	86.7	
EG	0.52	86.01	89.46
	0.45	89.52	
	0.49	85.52	
	0.65	96.8	
The synthesis with surfactant 1 % (v/v)			
Methanol	0.27	26.71	14.12
	0.27	0.03	
	0.3	9.23	
	0.31	20.5	
EG	0.29	27.19	18.42
	0.26	19.4	
	0.33	13.52	
	0.26	13.56	

polyurethane foam soy- based is more larger and visible than polyurethane petroleum-based. This can be the weaknesses. This problem can be solved and improved by silicone surfactant into polyurethane synthesis.

The inclusion of 1% (v/v) of silicone compared to without using silicone to polyol methanol based, are able lowering the foam absorbency to water 83% of reduction. As with ethylene glycol based is 79.4 % of reduction. With this method the foam ability to absorb water can be minimize. The cells percentages of absorbency are shown in Table 2. The absorbency of soy-based polyurethane if compared to petroleum based as shown in table 3.

Table 3. Characterization of Flexible Polyurethane

Observation	Polyurethane		
	Methanol	EG	Synthetic
^a Water Absorbency (%)	86.76	98.46	14.54
Density (gr/cm3)	0.0992	0.1156	0.1295
Pore Diameter (ml)	7.8	5	0.2

$$^a \text{ water absorbency} = \frac{w_0 - w_t}{w_0} \times 100\%$$

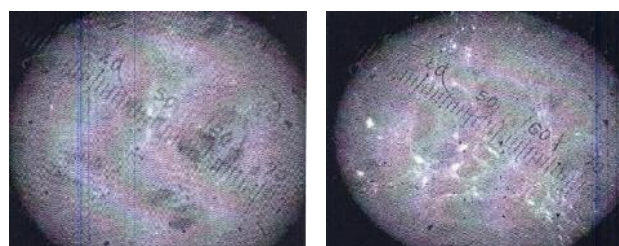
w0: initial weight

wt: weight after soaked

Methanol (PU1); EG (PU2)

Polyurethane Surface Images

The polyurethane surface were characterized using Light Microscope with the magnification of three times. Visible cavities (void) generated by the surface of polyurethane (PU2) is much larger and comparable to polyurethane (PU1). This is not significant to density, whereas PU2 is greater than PU1, indicated the reaction were at the backbone of hydrocarbon which is in the bulk of the system.



Methanol Based (PU1) Ethylene Glycol Based (PU2)

Figure 3. Surface images of Polyurethane

Cell Morphology

The cellular were used to take images of cured solid polyurethane foams using SEM micrograph. Polyurethane (PU2) has slightly imperfect form compared to foams polyurethane (PU1).

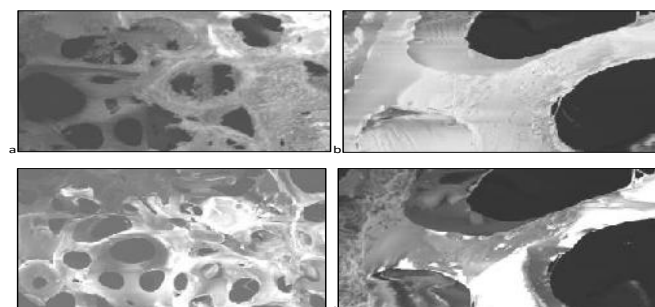


Figure 4. Cell Morphology of polyurethane; a. (PUR 2);40x 500µm b. (PUR 2): 170x 100 µm c. (PUR 1): 40x 500 µm and d. (PUR1): 170x 100µm

As visually can be seen the open cell of PU2 ethylene glycol-based the size of its open cell is larger than PU1 methanol-based. In PU1 the open cell is more narrower but great in numbers.

Conclusion

The soy-polyurethane if implemented in wet media still meet much weaknesses. The inclusion of silicone surfactant substances into the polyurethane formula can minimize water uptake. The responses of methanol based to silicone is much greater in reduction compared to ethylene glycol as obeying the properties desired.

Acknowledgement

The author gratefully acknowledge the support of the Indonesia Department of higher education as funding the research

References

- [1] Narine, Kong, Bouzidi dan Sporns, Physical properties of polyurethane produced from polyol seed oils; elastomers. *J Amer Oil Chem Soc* 84: 2007, pp. 55-63
- [2] Guidoti et.al, Heterogenous catalytic epoxidation of fatty acid and methyl esters on titanium grafted silicas, *Green Chem*, 5, 2003, pp. 421-424
- [3] Kong and Narine 2007. Physical properties of polyurethane plastic sheets produced from polyols from canola oil biomacromolecules 8; 2007, pp. 2203-2209
- [4] Narine, Kong, Bouzidi dan Sporns, Physical properties of polyurethane produced from polyol seed oils; elastomers. *J Amer Oil Chem Soc* 84: 2007, pp. 55-63
- [5] Hanson and Larock, Soybean oil divinylbenzene thermosetting polymers: synthesis, structure, properties and their realtionships. *Pollymer* 42(4):2001, pp. 1567-1579
- [6] Petrovic, Cevalos, Javni, Schaefer, and Justice 2005. Soy oil based segmented polyurethanes. *J Polym Phys* 43(22):2005, pp. 3178-3190
- [7] Zlatanic, Petrovic, and Dusek, Structure and properties of triolein based polyurethane networks, *Biomacromolecules*, 3: 2002, pp. 1048-1056
- [8] Lligadas, Ronda, Galia and Cadiz, Polyurethane networks from fatty acid based aromatic triols: synthesis and characterization. *Biomacromolecules* 8:2007, pp.1858-1864
- [9] Andjelkovic and Larock, Novel rubbers from cationic copolymerization of soybean oils and dicyclopentadiene 1: synthesis and characterization. *Biomacromolecules* 7:2006, pp. 927-936
- [10] Guner, Yagci, and Erciyes 2006. Polymers from triglyceride oils. *Prog Polym Sci* 31: 2006, pp. 633-670
- [11] Wang, T.L, Hsieh, *Polym J*, 29 1996, p.839
- [12] Bauman, H., Bühler,M., Fochen, H., Hirsinger, F. Zobelien *Angew, H., Chem. Int. Ed Engl.*, 27, 1998, pp.41-62
- [13] Datta, J and Głowińska, E., Chemical modifications of natural oils and examples of their usage for polyurethane synthesis, *Journal of Elastomers & Plastics*, Vol 46(1), DOI: 10.1177/0095244312459282, 2014, pp. 33-42
- [14] Firdaus, F.E, Optimization of Soy Epoxide Hydroxylation to Properties of Prepolymer polyurethane, *Proceeding International Conference on Applied Science Engineering and Information Technology*, ISSN 2010-3778, Waset v81 2011, Singapore, p. 189
- [15] Firdaus, F.E, Silicone on Blending Vegetal Petrochemical Based Polyurethane, *Proceeding International Conference on Applied Chemistry*, ISSN 2010-3778, Waset 65, 2010, Tokyo, p.350